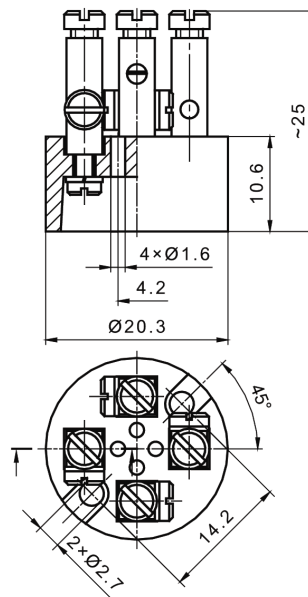
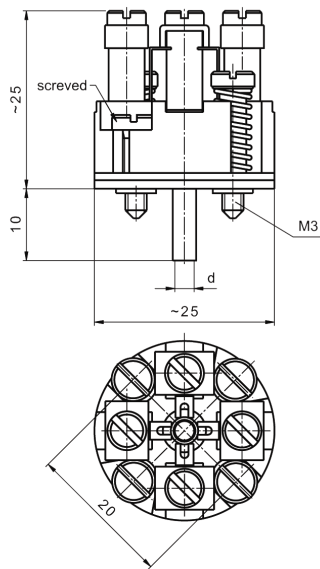
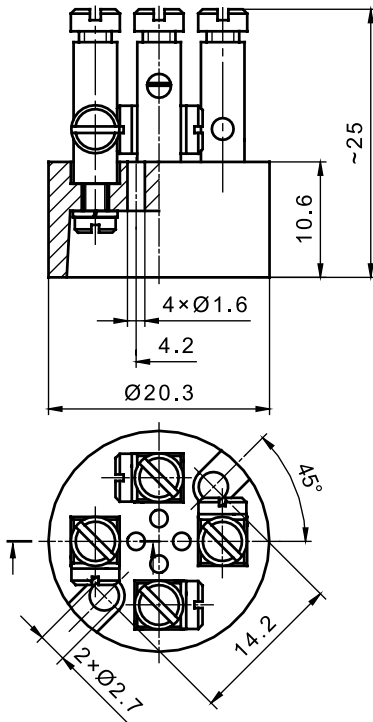


## Type M terminal blocks



## TERMINAL BLOCK – type M2S-VS7

(old type: KMS 14 450)



### Technical data

Place to install	„M” type connection heads with 14.2mm mounting holes spacing
Way of install	Directly fixed to the connection head by M2.5 screws
Material of block	Steatite C220 ac. to IEC 60672-3
Material of terminals	Nickel – plated brass
Max. number of terminals	4
Max. Diameter of inside wire	$\varnothing 1\text{mm}$
Way of connection inside wire to the terminals	By screwing

### Ordering

Type	Number of terminals
M2S-VS7-2 to M2S-VS7-4	2 to 4

**Sample:** Terminal block M2S-VS7-2

### Unit for fixing to the connection head

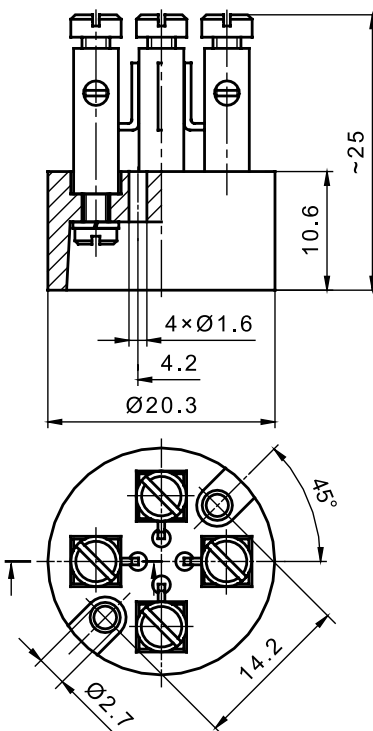
Name	Type
Mounting kit	KMD-14.2

### Unit for spring loaded version

Mounting kit	–
Springing disk	–
Bush springing disk	–

## TERMINAL BLOCK – type M2S-VL5

(old type: KML 38 268)



### Technical data

Place to install	„M” type connection heads with 14.2mm mounting holes spacing
Way of install	Directly fixed to the connection head by M2.5 screws
Material of block	Steatite C 220 ac. to IEC 60672-3
Material of terminals	Nickel – plated brass
Max. number of terminals	4
Max. Diameter of inside wire	$\varnothing 0.5\text{mm}$
Way of connection inside wire to the terminals	By soldering

### Ordering

Type	Number of terminals
M2S-VL5-2 to M2S-VL5-4	2 to 4

**Sample:** Terminal block M2S-VL5-2

### Unit for fixing to the connection head

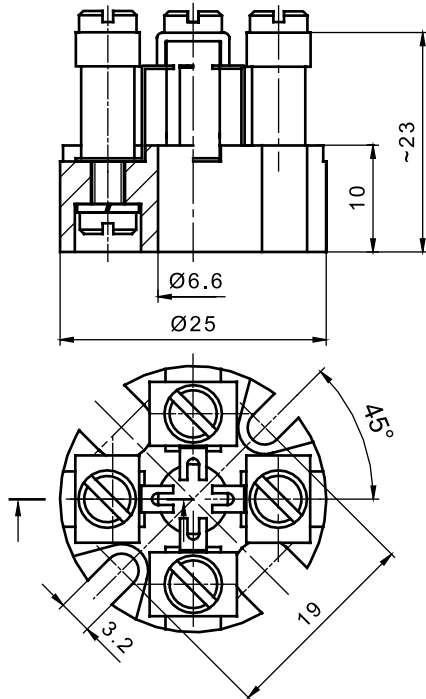
Name	Type
Mounting kit	KMD-14.2

### Unit for spring loaded version

Mounting kit	–
Springing disk	–
Bush springing disk	–

## TERMINAL BLOCK – type M5S-VS3L

(new type)



### Technical data

Place to install	„M” type connection heads with 19 or 20mm mounting holes spacing
Way of install	Directly fixed to the connection head by M2.5 or M3 screws, or springing disk
Material of block	Steatite C 220 ac. to IEC 60672-3
Material of terminals	Nickel – plated brass
Max. number of terminals	4
Max. Diameter of inside wire	Ø1mm
Way of connection inside wire to the terminals	By soldering

### Ordering

Type	Number of terminals
M5S-VS3L-2 to M5S-VS3L-4	2 to 4

**Sample:** Terminal block M5S-VS3L-2

### Unit for fixing to the connection head

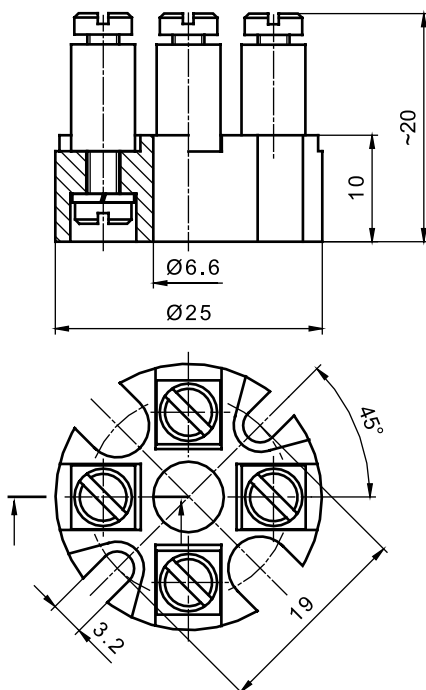
Name	Type
Mounting kit	KMD-19 or KMD-20

### Unit for spring loaded version

Mounting kit	KMF-1
Springing disk	MSD1-d d = 1.5; 3; 4.5; 6
Bush springing disk	MSDB1-d d = 1.5; 3; 4.5; 6

## TERMINAL BLOCK – type M6S-VS2

(new type)



### Technical data

Place to install	„M” type connection heads with 19 or 20mm mounting holes spacing
Way of install	Directly fixed to the connection head by M2.5 or M3 screws, or springing disk
Material of block	Steatite C 220 ac. to IEC 60672-3
Material of terminals	Nickel – plated brass
Max. number of terminals	4
Max. diameter of inside wire	Ø1mm
Way of connection inside wire to the terminals	By screwing

### Ordering

Type	Number of terminals
M6S-VS2-2 to M6S-VS2-4	2 to 4

**Sample:** Terminal block M6S-VS2-4

### Unit for fixing to the connection head

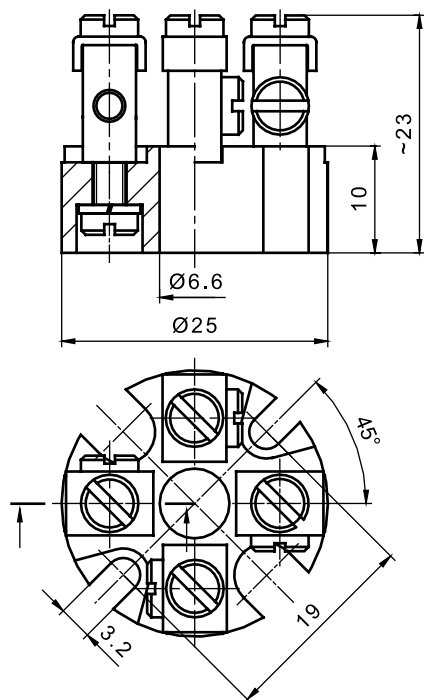
Name	Type
Mounting kit	KMD-19 or KMD-20

### Unit for spring loaded version

Mounting kit	KMF-1
Springing disk	MSD1-d d = 1.5; 3; 4.5; 6
Bush springing disk	MSDB1-d d = 1.5; 3; 4.5; 6

## TERMINAL BLOCK – type M5S-VS5

(new type)



### Technical data

Place to install	„M” type connection heads with 19 or 20mm mounting holes spacing
Way of install	Directly fixed to the connection head by M2.5 or M3 screws
Material of block	Steatite C 220 ac. to IEC 60672-3
Material of terminals	Nickel – plated brass
Max. number of terminals	4
Max. diameter of inside wire	Ø1.5mm
Way of connection inside wire to the terminals	By screwing

### Ordering

Type	Number of terminals
M5S-VS5-2 to M5S-VS5-4	2 to 4

**Sample:** Terminal block M5S-VS5-2

### Unit for fixing to the connection head

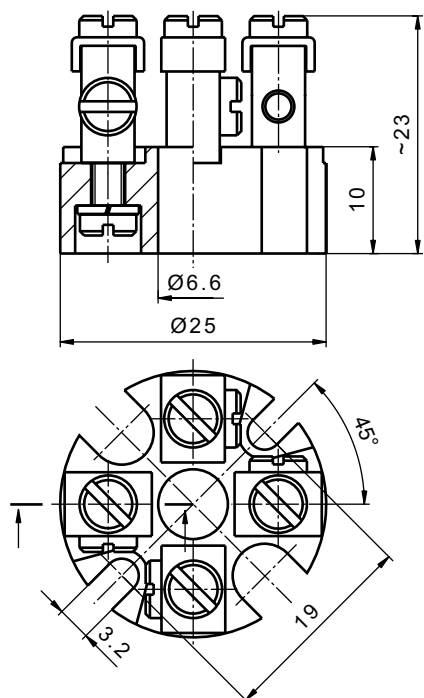
Name	Type
Mounting kit	KMD-19 or KMD-20

### Unit for spring loaded version

Mounting kit	KMF-1
Springing disk	MSD1-d d = 1.5 ; 3 ; 4.5 ; 6
Bush springing disk	MSDB1-d d = 1.5; 3; 4.5; 6

## TERMINAL BLOCK – type M5S-VS5 for spring loaded version

(new type)



### Technical data

Place to install	„M” type connection heads with 19 or 20mm mounting holes spacing
Way of install	Directly fixed to the connection head by M2.5 or M3 screws
Material of block	Steatite C 220 ac. to IEC 60672-3
Material of terminals	Nickel – plated brass
Max. number of terminals	4
Max. diameter of inside wire	Ø1.5mm
Way of connection inside wire to the terminals	By screwing

### Ordering

Type	Number of terminals
M5S-VS5-2 to M5S-VS5-4	2 to 4

**Sample:** Terminal block M5S-VS5-2

### Unit for fixing to the connection head

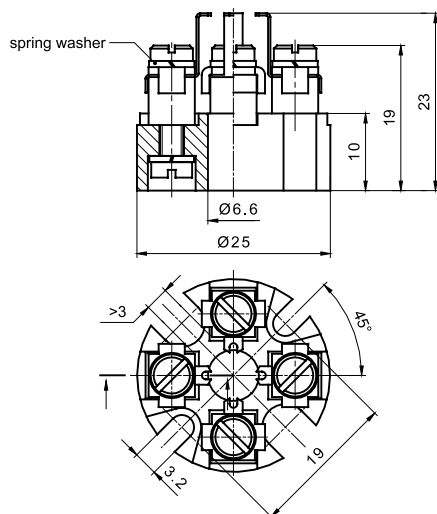
Name	Type
Mounting kit	KMD-19 or KMD-20

### Unit for spring loaded version

Mounting kit	KMF-1
Springing disk	MSD1-d d = 1.5 ; 3 ; 4.5 ; 6
Bush springing disk	MSDB1-d d = 1.5; 3; 4.5; 6

## TERMINAL BLOCK – type M6S-VS10L

(new type)



### Technical data

Place to install	„M” type connection heads with 19 or 20mm mounting holes spacing
Way of install	Directly fixed to the connection head by M2.5 or M3 screws
Material of block	Steatite C220 ac. to IEC 60672-3
Material of terminals	Nickel – plated brass
Max. number of terminals	4
Max. diameter of inside wire	$\varnothing 1$ mm
Way of connection inside wire to the terminals	By soldering
Protection Method	EEExia ac. to EN 50020

### Ordering

Type	Number of terminals
M6S-VS10L-2 to M6S-VS10L-4	2 to 4

**Sample:** Terminal block M6S-VS10L-4

### Unit for fixing to the connection head

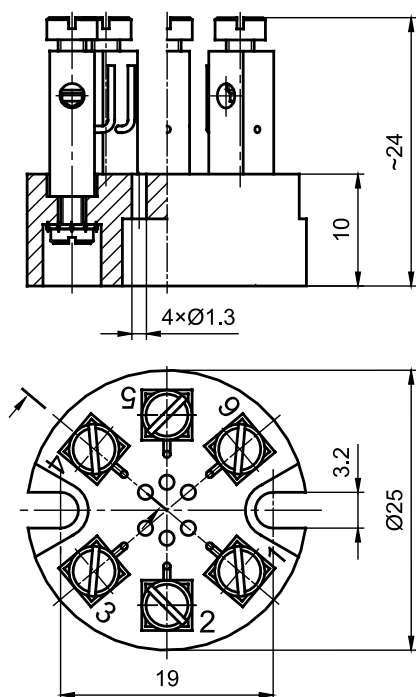
Name	Type
Mounting kit	KMD-20, KMD-20X

### Unit for spring loaded version

Mounting kit	–
Springing disk	–
Bush springing disk	–

## TERMINAL BLOCK – type M7S-VL5

(new type)



### Technical data

Place to install	“M” type of connection heads with 19 or 20mm mounting holes spacing
Way of install	Directly fixed to the connection head by M2.5 or M3 screws
Material of block	Steatite C220 ac. to IEC 60672-3
Material of terminals	Nickel-plated brass
Max. number of terminals	6
Max. Diameter of inside wire	$\varnothing 1$ mm
Way of connection inside wire to the terminals	By soldering

### Ordering

Type	Number of terminals
M7S-VL5-2 to M7S-VL5-6	2 to 6

**Sample:** Terminal block M7S-VL5-6

### Unit for fixing to the connection head

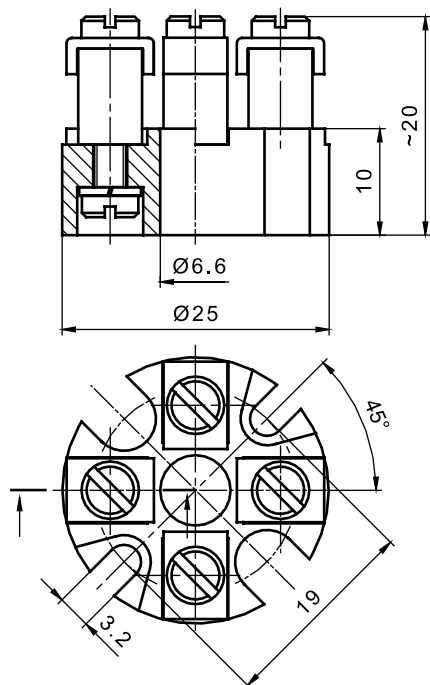
Name	Type
Mounting kit	KMD-19 or KMD-20

### Unit for spring loaded version

Mounting kit	–
Springing disk	–
Bush springing disk	–

## TERMINAL BLOCK – type M6S-VS4

(new type)



### Technical data

Place to install	„M” type connection heads with 19 or 20mm mounting holes spacing
Way of install	Directly fixed to the connection head by M2.5 or M3 screws or springing disk
Material of block	Steatite C220 ac. to IEC 60672-3
Material of terminals	Nickel – plated brass
Max. number of terminals	4
Max. diameter of inside wire	Ø1mm
Way of connection inside wire to the terminals	By screwing

### Ordering

Type	Number of terminals
M6S-VS4-2 to M6S-VS4-4	2 to 4

**Sample:** Terminal block M6S-VS4-4

### Unit for fixing to the connection head

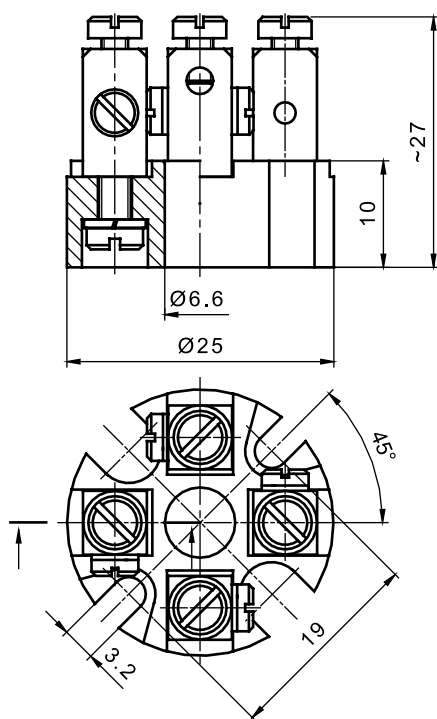
Name	Type
Mounting kit	KMD-19 or KMD-20

### Unit for spring loaded version

Mounting kit	KMF-1
Springing disk	MSD1-d d = 1.5; 3; 4.5; 6
Bush springing disk	MSDB1-d d = 1.5; 3; 4.5; 6

## TERMINAL BLOCK – type M6S-VS9

(new type)



### Technical data

Place to install	„M” type connection heads with 19 or 20mm mounting holes spacing
Way of install	Directly fixed to the connection head by M2.5 or M3 screws
Material of block	Steatite C220 ac. to IEC 60672-3
Material of terminals	Nickel – plated brass
Max. number of terminals	4
Max. Diameter of inside wire	Ø1.35mm
Way of connection inside wire to the terminals	By screwing

### Ordering

Type	Number of terminals
M6S-VS9-2 to M6S-VS9-4	2 to 4

**Sample:** Terminal block M6S-VS9-2

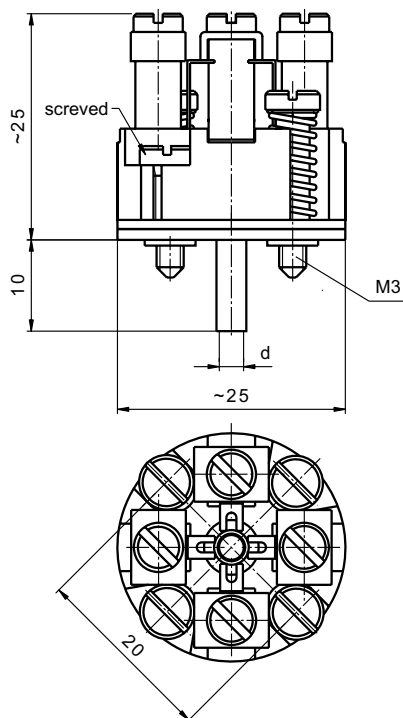
### Unit for fixing to the connection head

Name	Type
Mounting kit	KMD-19 or KMD-20

### Unit for spring loaded version

Mounting kit	KMF-1
Springing disk	MSD1-d d = 1.5; 3; 4.5; 6
Bush springing disk	MSDB1-d d = 1.5; 3; 4.5; 6

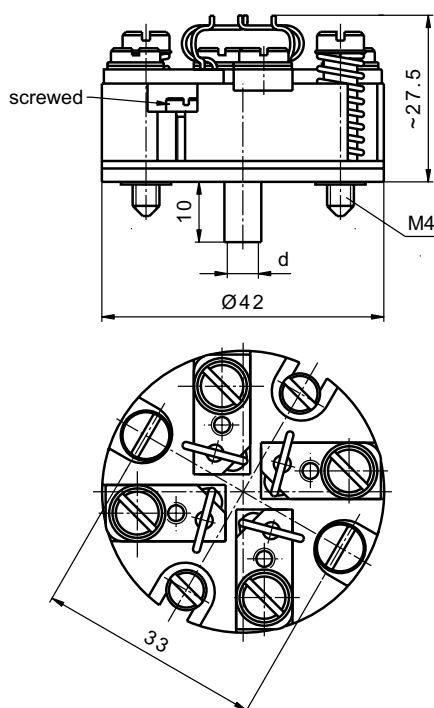
## SPRING LOADED TERMINAL BLOCK type SBd-M5S-VS3L



Technical data	
Place to install	„M” type connection heads – with 20mm mounting holes spacing
Way of install	Springing fixed to the connection head by M3 screws
Way of connecting with measuring insert	By pressing
Diameter of measuring insert	d = 3; 4.5; 6 [mm]
Max. number of terminals	4
Max. Diameter of inside wire	Ø1mm
Way of connecting inside wire to the terminals	By soldering

Ordering		
Type	d [mm]	Number of terminals
SBd-M5S-VS3L-2 to SBd-M5S-VS3L-4	3; 4.5; 6	2 to 4
<b>Sample:</b> Spring loaded terminal block SBØ6-M5S-VS3L-4		

## SPRING LOADED TERMINAL BLOCK type SBd-B1S-FL1

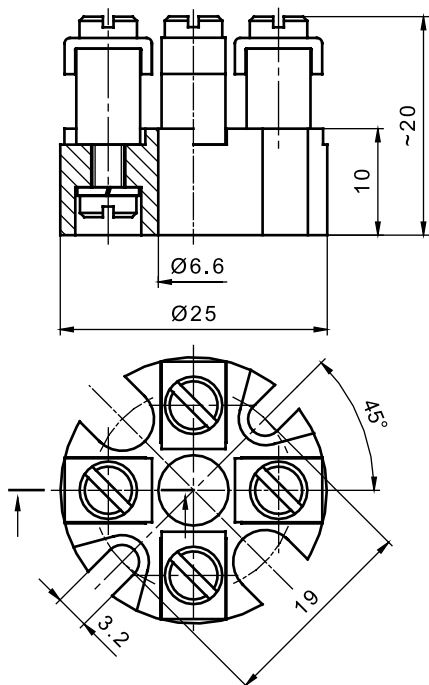


Technical data	
Place to install	„B” type connection heads – with 33 mm mounting holes spacing
Way of install	Springing fixed to the connection head by M4 screws
Way of connecting with measuring insert	By pressing
Diameter of measuring insert	d = 3; 4.5; 6; 8 [mm]
Max. number of terminals	4
Max. Diameter of inside wire	Ø1mm
Way of connecting inside wire to the terminals	By soldering
Material of connecting wire	Ag (Ø0.8); J type (Ø1); K type (Ø1)

Ordering			
Type	d [mm]	Number of terminals	Material of connecting wire
SBd-B1S-FL1-2 to SBd-B1S-FL1-4	3; 4.5; 6; 8	2, 4	Ag; J; K
SBd-B1S-FL1-3		3	Ag
<b>Sample:</b> Spring loaded terminal block SBØ6-B1S-FL1-4Ag			

## TERMINAL BLOCK - type M6S-VS4

(new type)



### Technical data

Place to install	„M” type connection heads with 19 or 20mm mounting holes spacing
Way of install	Directly fixed to the connection head by M2.5 or M3 screws or springing disk
Material of block	Steatite C220 ac. to IEC 60672-3
Material of terminals	Nickel – plated brass
Max. number of terminals	4
Max. diameter of inside wire	$\varnothing 1\text{mm}$
Way of connection inside wire to the terminals	By screwing

### Ordering

Type	Number of terminals
M6S-VS4-2 to M6S-VS4-4	2 to 4

**Sample:** Terminal block M6S-VS4-4

### Unit for fixing to the connection head

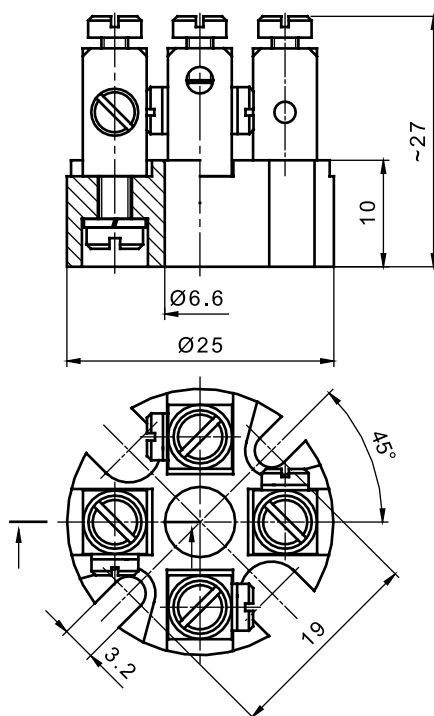
Name	Type
Mounting kit	KMD-19 or KMD-20

### Unit for spring loaded version

Mounting kit	KMF-1
Springing disk	MSD1-d d = 1.5; 3; 4.5; 6
Bush springing disk	MSDB1-d d = 1.5; 3; 4.5; 6

## TERMINAL BLOCK - type M6S-VS9

(new type)



### Technical data

Place to install	„M” type connection heads with 19 or 20mm mounting holes spacing
Way of install	Directly fixed to the connection head by M2.5 or M3 screws
Material of block	Steatite C220 ac. to IEC 60672-3
Material of terminals	Nickel – plated brass
Max. number of terminals	4
Max. Diameter of inside wire	$\varnothing 1.35\text{mm}$
Way of connection inside wire to the terminals	By screwing

### Ordering

Type	Number of terminals
M6S-VS9-2 to M6S-VS9-4	2 to 4

**Sample:** Terminal block M6S-VS9-2

### Unit for fixing to the connection head

Name	Type
Mounting kit	KMD-19 or KMD-20

### Unit for spring loaded version

Mounting kit	KMF-1
Springing disk	MSD1-d d = 1.5; 3; 4.5; 6
Bush springing disk	MSDB1-d d = 1.5; 3; 4.5; 6



**kamet**  
**thermoccomponents**

Kamet Trading  
Franciscusweg 9-10  
1216 SK Hilversum

Tel. : +31 (0)35-628 2910  
Fax : +31 (0)35-628 2912  
E-mail : [info@kamet-trading.nl](mailto:info@kamet-trading.nl)  
Internet : [www.kamet-trading.nl](http://www.kamet-trading.nl)