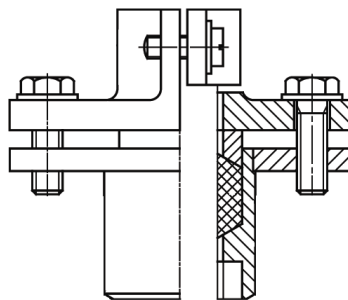
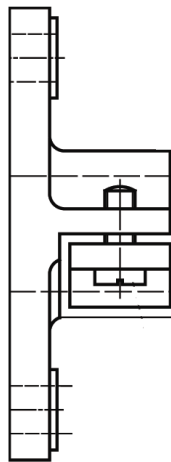
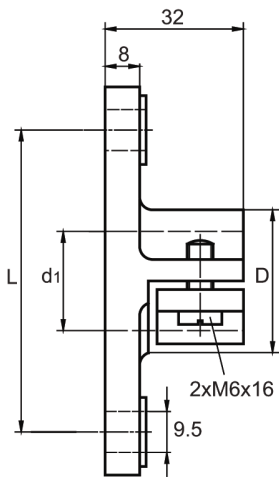


Mounting accessories for Temperature sensors

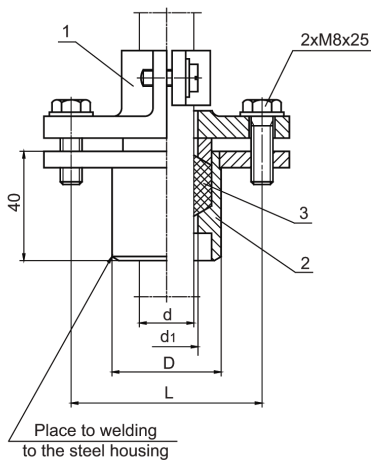


Mounting Bracket type UZ 21



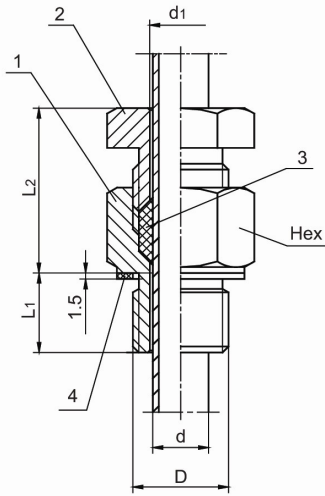
Type	Diameter of clamping pipe d (mm)	Dimensions (mm)		
		d1	D	L
UZ 21 – 15	Ø 15	16	27	55
UZ 21 – 22	Ø 22	23	33	70
UZ 21 – 26-29	Ø 26-29	29	39	70
UZ 21 – 32	Ø 32	33	39	70
Material	Cast steel, black powder lacquer coating			
Max temp.	300°C			
Gas tightness	None			

Mounting Bracket for welding type UZ 11



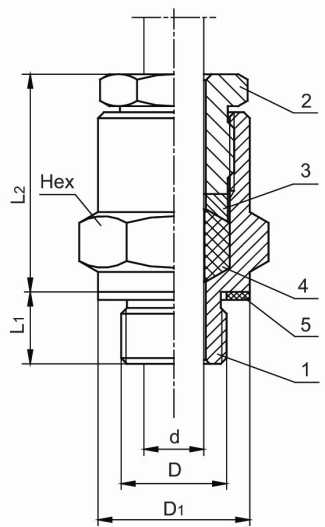
Type	Diameter of clamping pipe d (mm)	Dimensions (mm)		
		d1	D	L
UZ 21 – 15	Ø 15	16	35	55
UZ 21 – 22	Ø 22	23	40	70
UZ 21 – 32	Ø 32	33	50	70
Material	1. Cast steel, black powder lacquer coating 2. Steel 1.0401, black powder lacquer coating 3. Ceramic cord			
Max temp.	300°C			
Gas tightness	To 1 bar (300°C)			

Compression fitting Type UG 1



Type	Diameter of sheath d (mm)	Type of thread D	Dimensions			
			D1	Hex	L1	L2
UG1-6	Ø 6	M16x1,5	Ø 6,5	22	16	~32
		M18x1,5		27	20	
		G1/2				
UG1-8	Ø 8	M16x1,5	Ø 8,5	22	16	
UG1-12	Ø 12	M20x1,5	Ø 12,5	27	20	~34
		G3/4		32		
UG1-15	Ø 15	M24x1,5	Ø 15,5	32	20	~35
		G1/2		41	25	
		G1				
UG1-20	Ø 20	M30x2	Ø 20,5			
UG1-22	Ø 22	G1	Ø 22,5			
Material of elements		1. Steel 1.0715 2. Steel 1.0715 (zinc plated or brüniert) 3. Ceramic packing cord 4. BELPA				
Max temp.		300°C				
Gas tightness		To 1 bar (300°C)				

Compression fitting Type UG 2



Type	Diameter of sheath d (mm)	Type of thread D	Dimensions			
			D1	Hex	L1	L2
UG2-12	Ø 12	M16x1,5	Ø 34	36	18	~59
UG2-15	Ø 15	G1/2	Ø 34	36	18	~59
		G3/4	Ø 38	41	18	~59
UG2-22	Ø 22	G1	Ø 45	46	25	~67
UG2-26	Ø 26	G1 ¼	Ø 55	55	30	~86
UG2-32	Ø 32	G1 ¼	Ø 55	55	30	~86
Material of elements		1. Steel 1.0715 2. Steel 1.0715 (zinc plated or brüniert) 3. Ceramic packing cord 4. BELPA				
Max temp.		300°C				
Gas tightness		To 1 bar (300°C)				



kamet
thermoccomponents

Kamet Trading
Franciscusweg 9-10
1216 SK Hilversum

Tel. : +31 (0)35-628 2910
Fax : +31 (0)35-628 2912
E-mail : info@kamet-trading.nl
Internet : www.kamet-trading.nl